



# Looking

## for the Evidence

### Home

[Home](#)

### Research Blog

[Research Blog](#)

### Dark Ages - Viking Research

- [Armour Summary](#)
- [Food Finds in Britain](#)
- [Food Finds in Britain - Viking](#)
- [Frankish Clothing](#)
- [Hats](#)
- [Helmets](#)
- [Historic Cook Books](#)
- [Hoods](#)
- [Lamellar Armour](#)
- [Mail Armour](#)
- [Saxon Clothing](#)
- [Scale Armour](#)
- [Shoes part 1](#)
- [Shoes part 2](#)
- [Varangian DNA](#)
- [Varangian Voice Articles](#)
- [Viking - Saxon Sewing Box](#)
- [Viking Clothing Guides](#)
- [Viking Food](#)
- [Viking Games pieces](#)**
- [Wooden Shields](#)

### 17th & 19th Century Research

- [Neckstocks](#)
- [On the Frontier Newletters](#)
- [Shoes part 3](#)

### Australian WW1 Women

[Australian WW1 Women Surname database Search](#)

If you wish to do a surname search for any records please go

[Home](#) >

## Viking Games pieces

### Games Boards

Photo (click on the photos to see a bigger image)	Location	Date, structure	No	Inv r
<p style="text-align: center;"><i>Gjermundbufunnet</i></p> <p style="text-align: center;"><i>60</i></p> <p style="text-align: center;"><i>Brettspill fra Gokstadskipet, rekonstruksjon, forsiden.</i></p> <p style="text-align: center;"><i>Fig. 42a. Spillebrett fra Gokstadskipet, Sunde, Fyngfjeld - forsiden. Rekonstruksjon.</i></p>	Norway, Gokstad Ship Burial	late 9th century	13 x13 squares gaming board measuring 69 cm on one side including edges	
<p style="text-align: center;"><i>Gjermundbufunnet</i></p> <p style="text-align: center;"><i>61</i></p> <p style="text-align: center;"><i>Brettspill fra Gokstadskipet, rekonstruksjon, baksiden.</i></p> <p style="text-align: center;"><i>Fig. 42b. Spillebrett fra Gokstadskipet, Sunde, Fyngfjeld - baksiden. Rekonstruksjon.</i></p>				

[Übersetzen](#)

to our data base search site

[Looking for the Evidence](#)  
[– Australian WW1 Women](#)  
[Surname database search](#)

**WW1 Research**

- [WW1 Australian Women Deaths](#)
- [WW1 Australian Women Doctors](#)
- [WW1 Australian Women service units](#)
- [WW1 Women Research Resources](#)
- [WW1 Roll of Honour Boards](#)
- [Bearded Soldiers of WW1](#)
- [Red Cross Men](#)
- [WW1 Victorian Railways Unit](#)
- [WW1 Resources for Re-enactors](#)
- [Nurses after the War](#)
- [Victorian Nurses](#)
- [New Zealand Volunteer Sisterhood](#)

**Victorian and Military Railways Research**

[Women of the Victorian Railways](#)

[WW1 Victorian Railways Unit](#)

[Off the Rails and around the Bend - The Train Derailment at Belgrave, Victoria in 1906](#)

[The Edith Cavell locomotive](#)

[Victorian Railways - WW1 Military Trains And Other Areas of Service](#)

[Victorian Railways Volunteer Regiment](#)

[Victorian Railways - WW1 Roll of Honours and Obituaries Lists](#)



[Victorian Railways - WW11 Rolls of Honour and Obituaries List](#)

[Victorian Railway Employee Records](#)

[Victorian Railways WWII Ambulance Train](#)

[Belgrave Timber Tramway](#)



	Ballinderry, Ireland,	late 9th century	25x24 cm and has 7x7 peg holes.
  	Sweden, Uppland, Årby	Viking Period	? squares  looks to be nine man's morris

Gr

Looking for The Evidence  
 by [Jennifer Baker](#)  
 is licensed under a  
 Creative Commons Attribution-  
 NonCommercial 4.0 International  
 License.

**Other Research**

Gerald Ryan Queensland's Mystery  
 Abstract Artist  
 Underwater Explorers club of  
 Victoria  
 Jenny's Resume

**Other webpages by Jenny**

Hand Woven by Jenny  
 40th Regiment of Foot  
 Frontiers Living History Group  
 Hodegon NVG

**Our webpage on what  
 historical re-actment  
 items we make**


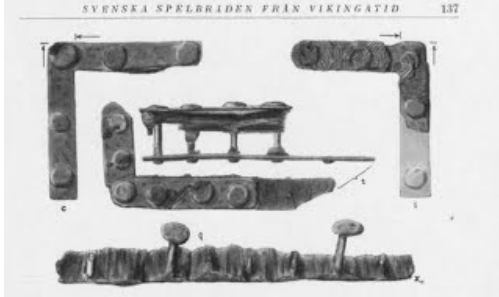
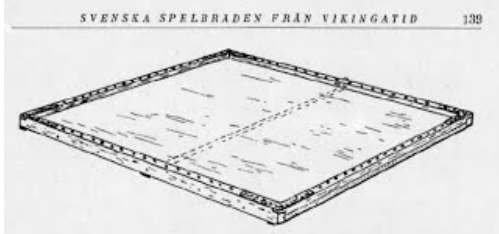
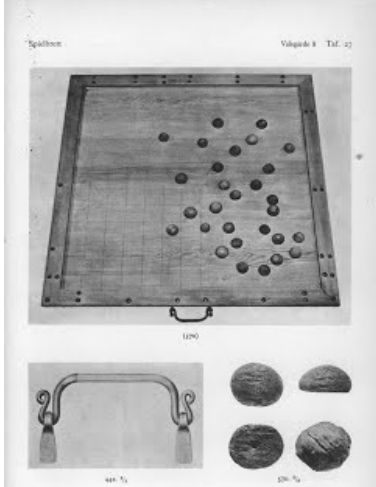


[Thatshim & Indunna's Historical  
 Re-creation Projects](#)

**Our Facebook Page**



[Our Facebook Page](#)

 <p>140 DAGMAR SELLING</p> <p>Fig. 5 (L. v.).          Spelbrädesbeslag och »späke» ur grav 624 på Björkö. Skala 1/2.          Gaming board mounts and »späke» from grave no. 624 at Björkö. Scale 1/2.</p> <p>Fig. 6 (L. h.).          Spelbrädesbeslag och stift ur grav 581 på Björkö. Skala 1/2.          Gaming board mounts and pins from grave no. 581 at Björkö. Scale 1/2.          (Pilarna beteckna träfibrens riktningsriktning. — The arrows indicate the direction of the grain of the wood.)</p>	<p>Sweden,          Birka</p>	<p>? squares</p>	<p>measured c          35-40 and 50          cm a side          respectively.</p>	<p>Birk          grav</p>
 <p>SVENSKA SPELBRÄDEN FRÅN VIKINGATID 137</p> <p>Fig. 2.          Spelbrädesbeslag i grav 886 på Björkö. (Pilarerna svara mot gravplanen          Fig. 1. Pilarerna beteckna träfibrens riktningsriktning. Skala 1/2.          Gaming board mounts in grave no. 886 at Björkö. (The letters refer to the graveplan in          Fig. 1. The arrows indicate the direction of the grain of the wood). Scale 1/2.</p>  <p>SVENSKA SPELBRÄDEN FRÅN VIKINGATID 139</p> <p>Fig. 4.          Rekonstruktion av spelbrädet i grav 886 på Björkö.          Reconstruction of gaming board in grave no. 886 at Björkö.</p>	<p>Sweden,          Birka</p>	<p>? squares</p>	<p>measured c          35-40 and 50          cm a side          respectively.</p>	<p>Birk          grav</p>
 <p>Spälbräde Valgärde Taf. 27</p> <p>1190</p> <p>441 1/2 236 1/2</p>	<p>Sweden,          Valsgärde</p>	<p>? squares</p>	<p></p>	<p>Val          grav</p>
<p>Trondheim,          Norway</p>	<p>early          twelfth          century</p>	<p>11x11          squares board</p>	<p></p>	<p><i>Hn          the          of 7          'Hn.          11.</i></p>

disj  
Mec  
the  
Tro.



**572** Wood, with ivory. Board: 1.25 dm. Piece: h. 3 cm. c. 1150-1150. Scandinavia. Vitenskapsmuseet, Trondheim, N297210H414, N08256FE1043

**Gaming board and gaming-piece**  
Little over half of a gaming board, now in 3 pieces. The field is divided into squares by incised parallel lines. A bordering rim, 7-8mm high, is fastened to the board with dowels. The board had been damaged and broken into two pieces and repaired by wedges on the back. The turned gaming-piece is pear-shaped with flat base; the top broken. A hole in the base. Polished on upper surface. Both found on the Publi Library Site.

The board was originally divided into 11x11 squares and was used for the game *Ástýfl*, in which pieces were moved by casting a die (cf. cat. no. 71, 347, 365). In Trondheim *högtyfl* was replaced by chess in the mid-13th cent. Another game (*tric-trac*) is incised on the back of the board. AC02

BM: CIVILISATIONEN 1987, S. 11; MÖLLEN 1990



	Faroes Islands at Toftanes	dated to the tenth century)	a 13x13 squares board	
	Wimose, Fyn, Denmark	dated to the Roman Age AD400	18 x 18 squares board	
	Coppergate in York, England	10th century	15x15? squares or 19x19? squares Length 481mm, width 109mm, thickness 23mm	Fin 197 nun

158 | PROCEEDINGS OF THE SOCIETY, 1976-7

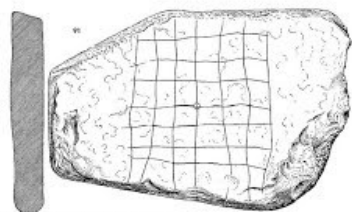
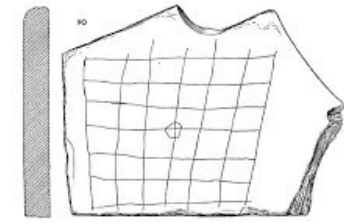


FIG 9 Buckquoy: stone gaming boards (scale 1:2)

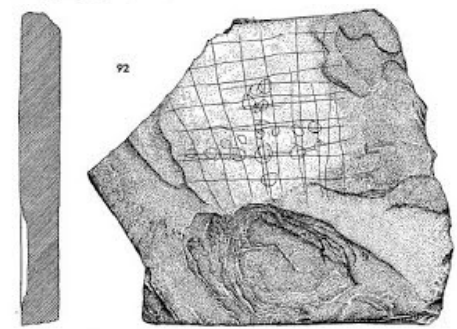
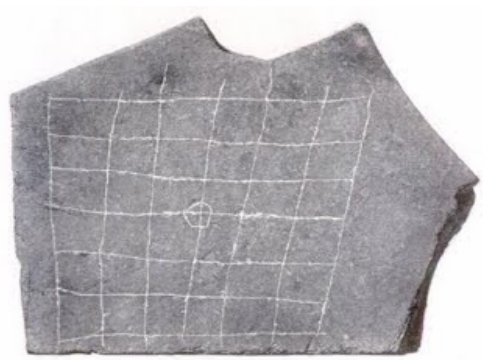


FIG 10 Buckquoy: stone gaming board (scale 1:2)



c Stone gaming-board, no. 90

Buckquoy,  
Orkney

Viking  
Period

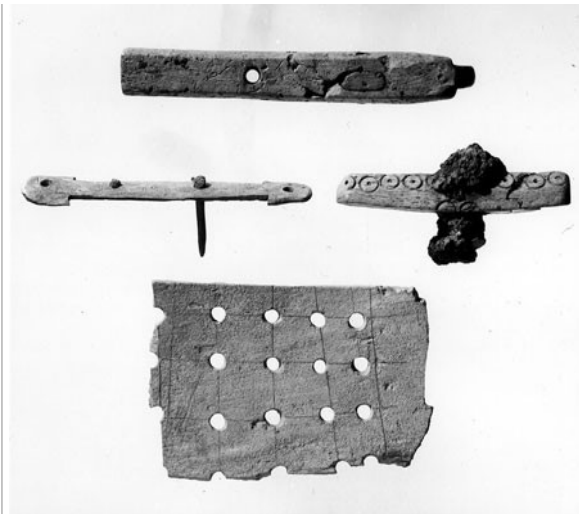
3 Stone game  
boards

Brough of  
Birsay,  
Orkney

Viking  
Period

whalebone  
gaming board

000  
Nati  
Scot



Jarlshof,  
Shetland

Viking  
Period

slate gaming  
board and four  
quartz pebble  
playing pieces,  
part of a set of  
16,

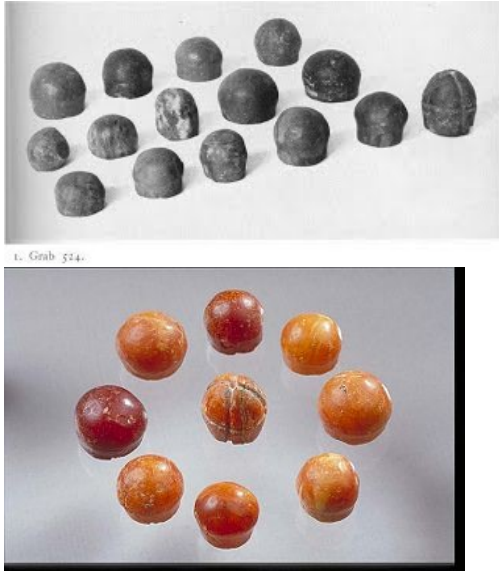

001  
Nati  
Scot

	<p>Novgorod, Russia</p>	<p>late 13th-14th century,</p>	<p>two sided gaming board made of spruce.</p> <p>Nine Man's Morriss board, on one side and the back of the board, another game board</p>

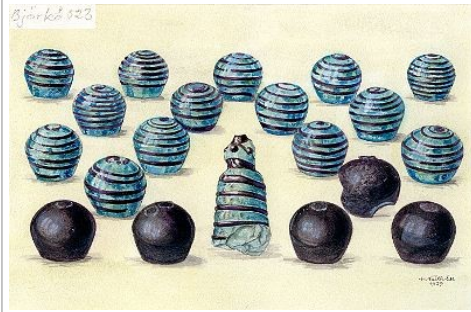
### Board Games Pieces

Inv no refers to museum fi nds ID number; SHM = Statens Historiska Museum, Stockholm; NO = Norway; SE = Sweden

Photo (click on the photos to see a bigger image)	Location	Date, structure	No of games pieces, Material	Inv no
	Norway, Vestfold, Tjølling parish, Østby	10th-century, no documentation	12 Amber	Oslo 1
	Norway, southern part of Vestfold	No documentation	1 Amber	Oslo 23
	NO, Hedmark, Furnes parish, Alu	Grave mound, no documentation	2 Amber	Oslo 24

	NO, Østfold, Trøgstad parish, Grevegg	9th/10th-century cremation grave	1 Amber	Oslo 35
	NO, Sogn og Fjordane, Gloppen parish, Hauge	9th-century boat grave	1 Amber	Bergen
	NO, Rogaland, Torvastad parish, Gunnarshaug	10th-century ship grave	18 Amber	Bergen
 <p>1. Grub 524.</p>	SE, Uppland, Adelsö parish, Björkö, gr. 524	10th-century chamber grave	15 Amber	SHM B.
	SE, Småland, Ljungby parish, Harby nr 5, poor-house	No documentation	c 13 Amber	Kalmar 904:1-2
DSCN7442-cropped-lores.jpg	SE, Östergötland, Kuddby parish, Skamby, monument 15, 2005	9th-century boat grave	23 Amber  The pieces' median dimensions are about 35 by 24 mm	Pending
	Sweden, Uppland, Adelsö parish, Birka, grave 523	VIKING-PERIOD	20 glass	SHM B.





Sweden, Uppland,  
Adelsö parish, Birka,  
grave 581

VIKING-  
PERIOD

28 antler

SHM B.



Sweden, Uppland,  
Adelsö parish, Birka,  
grave 644

VIKING-  
PERIOD

22 glass

SHM B.



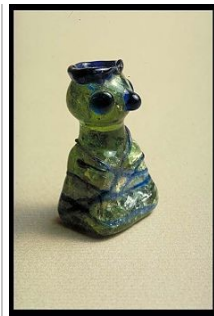
Sweden, Uppland,  
Adelsö parish, Birka,  
grave 750

VIKING-  
PERIOD

26 glass

SHM B.





3. Grab 886.



	Sweden, Uppland, Adelsö parish, Birka, grave 886	VIKING-PERIOD	25 bone	SHM B
	Sweden, Uppland, Adelsö parish, Birka, grave 986	VIKING-PERIOD	17 antler	SHM B
	Sweden, Uppland, Långtora parish, Långtora	VIKING-PERIOD	26 (21 glass, 4 bone, 1 soapstone)	SHM 20
	Sweden. Uppland, Björkö, Adelsö parish ,	VIKING-PERIOD	6 Gaming pieces. Teeth (from moose).	SHM 5
	Sweden. Uppland, Björkö, Adelsö parish ,	VIKING-PERIOD	Gaming pieces. Bone/antler. Grave find,	SHM 3
	Sweden. Uppland, Björkö, Adelsö parish , Grave 624	VIKING-PERIOD	27 Gaming pieces. Bone/antler, bronze, gilded. Grave find,	SHM 3



3. Grab 624.

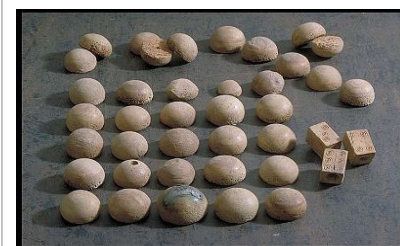


Sweden. Uppland, Björkö, Adelsö, Grave 463

vendel period

4 gaming pieces bone / horn

SHM 4



Sweden. Uppland, Uppsala , grave 2194

vendel period

37 gaming pieces bone / horn and 3 dice

SHM 1


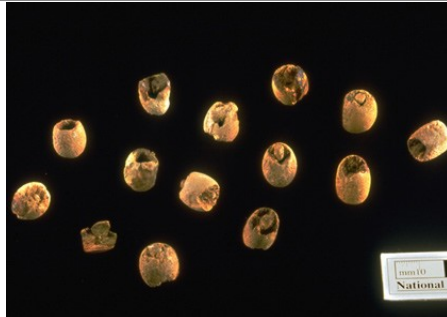



Sweden. Uppland, Vendel, grave 7250

vendel period

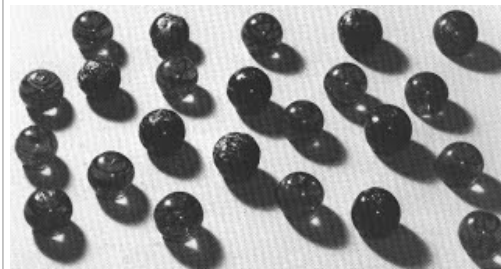
20 gaming pieces bone

SHM 1

	Sweden. Uppland, Adelsö	Viking period	3 gaming pieces bone / horn	SHM 1
	Brough of Birsay, Orkney	Viking period	antler playing piece	000-1 Nation Scotlar
	Balnakeil, Durness, Sutherland	Viking period	fourteen bone playing pieces were found in a Viking boy's burial at Balnakeil	000-( Nation Scotlar
	Jarlshof, Shetland	Viking period	small stone playing piece was found at the Viking settlement site of Jarlshof in Shetland	000-1 Nation Scotlar
	Ness Broch, Caithness and the Brough of Birsay, Orkney	Viking Period	whalebone playing piece	000-1 Nation Scotlar



The Vikings James Graham Campbell and Dafydd Kidd  
Page 84 Illus 37  
Glass gaming pieces from the rich cemetery at Valsgarde in Sweden



99: Glass playing pieces  
Provenience: Valsgarde, Uppland, Sweden  
Museum: Uppsala (P2)

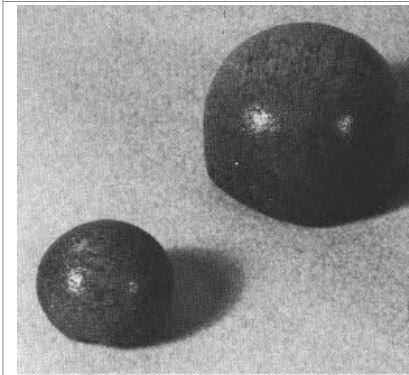
Set of glass playing pieces of oval spherical form, with flat base and manufacturing rim on top. There are fifteen of translucent green-blue glass with black spiral track, and eight of light dark brown glass. D: 2.5-2.6; H: 1.8-2.2 cm.

From last given no. 7 (1966) (primary male information). It is probable that this set of playing pieces would originally have had an additional green-blue piece (including the colored colored pieces 14 B) and a 'king', in which case the game might have been similar to the one known as reconstructed being played amongst the Sagas (Barrow 1952, 41-1, fig. 26). This game, known as 'skjaldbord' described from the Viking Period, Scandinavian game of board and dice, a type of war game. In the English version, one king and eight 'knights' were attached to stones 'skjaldbord'. Such imported glass playing pieces are present in a number of other graves with the date 1070 and elsewhere in Uppland, as also in Norway, the Skovde and the (Skovde 1077, 40-2, pl. 10), and 1010.

Lit: The Vikings, pl. 37.

Sweden,  
Valsgarde

Glass

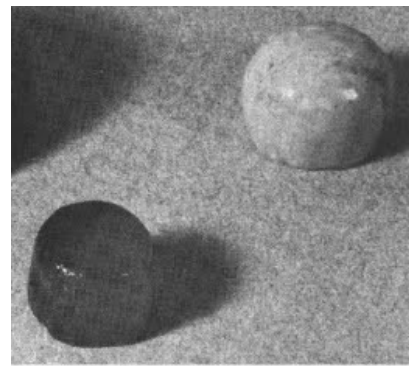


96: Bone playing pieces  
Provenience: Hedeby, Schleswig-Holstein, Germany  
Museum: Schleswig: LMS Hb. 6 7; N 2 9 - 6 0; D 2 00 - 9 0; v i; and Hb. 6 7, N 1 3-00; D 201-60; in

Two rounded bone playing pieces with flat circular bases, having central hollows from the lathe-bit. H2.4 and 1.7; D3.6 and 2.1 cm

Hedeby, Germany  
Viking  
Period

Bone



# 97: Amber gaming pieces  
 Provenance: Hedeby, Schleswig, Holstein, Germany  
 Museum: Schleswig; LMS HB-67; N 29-D; p 198-50; from a well; and HB-68; N 7-75; Q 174 10; n

Two gaming pieces of amber with flat circular bases. The larger has a rounded top; the smaller is essentially cylindrical in form, but tapers slightly in the top. H 1.6 and 1.3; D 2.2 and 1.8 cm.

Lit. The Vikings, pl. 74.

Hedeby, Germany

Viking Period

Amber



123  
 Glass  
 Gammehaug, Tvedestrand, Karmøy, Rogaland, Norway  
 ca. 800. Imported  
 National Museum, Bergen 00000

Sixteen gaming pieces (illustrated p. 142)  
 11 gaming pieces of light blue glass, 1 of dark blue with brown top and yellow points, 4 of yellow glass with brown top. From a grave.  
 Gaming pieces are found in graves (cf. cat. no. 75, 360) and settlements. The number of pieces in each find varies but they are of the same form, apart from one which diverges in colour and shape. They occur in many materials, glass examples being imported from Europe. Similar pieces are known from rich graves in Norway, Sweden, the Ukraine and Kiev.  
 400: the gaming pieces in general cat. no. 100-105; Graham-Campbell 1988, no. 82-87.

Fig. 11. Coloured gaming pieces from Gammehaug, Norway. C. 800. Cat. no. 123.

Norway

Glass



Iron, wood, gold, silver, bronze, staghorn, amber. Île de Groix, Morbihan, France. First half to mid 10th cent. Scandinavian. Musée des Antiquités nationales, St. Germain-en-Laye, 98117.

Viking grave from the Île de Groix (illustrated in part)  
 Games die made of the tusk of a marine mammal (walrus) (l. 2.8cm); 12 gaming-pieces of amber and marine-mammal tusk (walrus).

PVIB  
 Bibl.: du Châteauneuf & de Porrois 1908; Skerfving 1948, fig. 109-114; Mathier-Witt 1978, pl. 189, 94-114, 95-97 (189-92, 413-115).

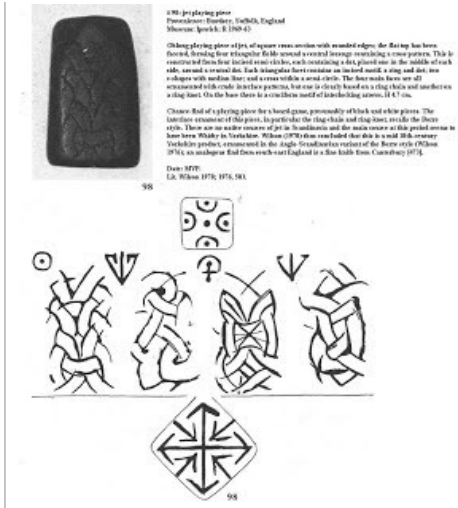
Ile de Groix, France

Walrus Tusk

Pinned Image

Westness, Rousay, Orkney


Set of 25 gaming pieces found in grave at Westness, Rousay, Orkney



England

Jet games piece

Dice

Photo (click on the photos to see a bigger image)	Location	Date, structure	No of games pieces, Material	Inv no	Ref
	Sweden. Uppland, Björkö, Adelsö,		Dice. Bone/antler. Björkö, Adelsö, Uppland, Sweden.	SHM 5208:1709	See also kulturarv/object/1/270230
Dice	Coppergate in York, England	10th century			<a href="http://www.viking-centre.org.uk/gallery/items/">http://www.viking-centre.org.uk/gallery/items/</a>

### Kommentare

Sie sind nicht berechtigt, Kommentare hinzuzufügen.

*Looking for the Evidence*  
*Historical Research work by Jennifer Baker*  
*indunna@cyberspace.net.au*

[Anmelden](#) | [Aktuelle Site-Aktivitäten](#) | [Missbrauch melden](#) | [Seite drucken](#) | Powered by [Google Sites](#)